



Blanche Lane | South Mimms | Potters Bar | EN6 3NY

Price Range £900,000

FINE & COUNTRY

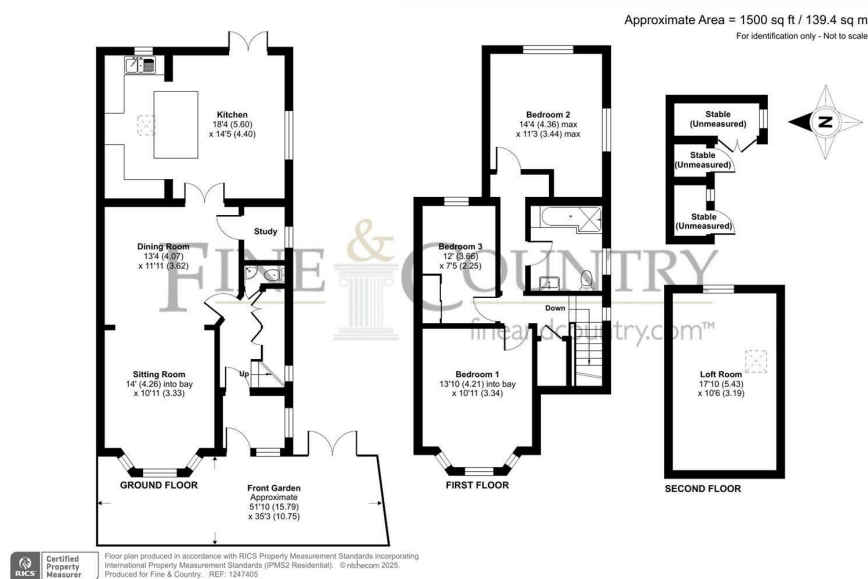
Blanche Lane | South Mimms
 Potters Bar | EN6 3NY
 Price Range £900,000



PRICE RANGE £900,000 - £950,000.

A quite unique and charming 3-4 bedroom semi-detached family home with a 2 acre paddock, stables and outbuildings, of particular interest to equestrian enthusiasts or those seeking secluded land.

- PRICE RANGE £900,000 - £950,000
- OF INTEREST TO EQUESTRIAN ENTHUSIASTS
- BEAUTIFULLY MAINTAINED HOME
- 3 BEDROOMS PLUS LOFT ROOM
- SECLUDED GROUNDS
- 2 ACRES
- STABLES
- CHARACTER
- KITCHEN/FAMILY ROOM
- STUDY



Energy Efficiency Rating		Current	Potential
Very energy efficient - lower running costs			
(92 plus) A			
(81-91) B			81
(69-80) C		61	
(55-68) D			
(39-54) E			
(21-38) F			
(1-20) G			
Not energy efficient - higher running costs			
England & Wales		EU Directive 2002/91/EC	

The Estate Office
 Bradmore Green
 Brookmans Park
 Hatfield
 Hertfordshire
 AL9 7QS
 01707 662222

brookmanspark@fineandcountry.com