



Oliver
James



Weavings Farm,
101 Abingdon Road,
Standlake, OX29 7QN
£1,900,000

Description

A generously proportioned stone farmhouse with equestrian facilities in this popular West Oxfordshire village offering over 3000sq ft of living space within 8 acres of private grounds.

The front door opens to a wide reception hall with oak flooring and staircase leading to the first floor accessing the five double bedrooms and family bathroom, incorporating a spacious main bedroom with large dressing room and en-suite bathroom. The ground floor features a large sitting room with stone fireplace and doors opening onto the rear garden, a dining room and flexible third reception room which will suit a variety of uses.

The hub of the house is the 'Farmhouse' kitchen, comprehensively fitted with shaker style units and granite worktops set around a central island. A door leads through to the utility/boot room and cloakroom adjacent to the back door.

Outside is a formal garden predominantly to the front and rear of the house with a detached office to the side of the rear garden. A gated driveway lies to the side of the house accessing the parking and turning area and leading through to the dedicated equestrian facility and buildings.

These buildings consist of 5 stables, barn, tack room and store with a workshop behind that can be converted to further three stables if required. The paddocks lie immediately to the north of the property, sub-divided into separate paddocks with mains fed water troughs.





Directions

On entering Standlake from the A420 Kingston Bagpuize side, drive past the turning into The High Street and the property will be found along on the right hand side, before the Cricket ground. OX29 7QN.

Location

Standlake is a popular village with good facilities, surrounded by countryside with numerous lakes and wildlife reserves. The village amenities include a parish church, public house, a post office, a primary school and a village hall. It is well situated for Oxford, Abingdon, Witney and Swindon, and is very accessible for London and Oxford via the A420/A40 to the M40/M4.

Daily shopping requirements can be found in the nearby market town of Witney (5 miles), as well as the University City of Oxford (13 miles).

A regular bus service runs to Witney and Abingdon. There is also good access to the wide range of excellent schools in Oxford, Witney and Abingdon. Didcot mainline station can be accessed via the A415 and the A34 with a regular service to London (Paddington) in approximately 40 minutes.

Alternatively Oxford Mainline Station (12 miles) offers an option for London Paddington (57 mins) or London Marlybone (1 hr) or Oxford Parkway (16 miles) also with a direct route into London Marylebone (57 mins).

Agents Notes

Central heating is via oil to radiators and the garden office has electric underfloor heating. Mains water and drainage.

By separate negotiation there is the option to purchase mobile feed shelters and other items of equestrian use. There is a concrete base down ready for a horse walker and base down for a round pen. Lights installed in the arena. Sand and rubber school with mirrors 40ft x20ft.





Weavings Farm, Abingdon Road, OX29

Approximate Gross Internal Area = 278.6 sq m / 2999 sq ft

Stables & Workshop = 136.7 sq m / 1471 sq ft

Stores = 40.2 sq m / 433 sq ft

Barn = 36.6 sq m / 394 sq ft

Office = 11.0 sq m / 119 sq ft

Tack Room = 11.1 sq m / 120 sq ft

Total = 514.2 sq m / 5536 sq ft

Oliver James

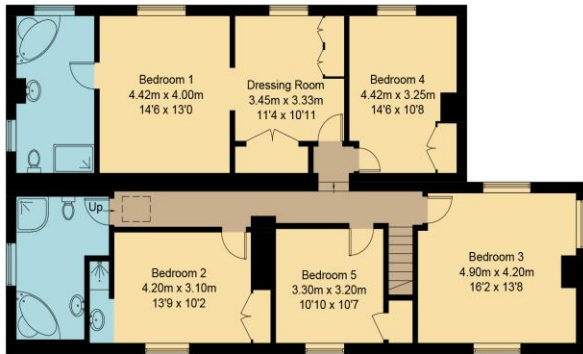
For further information, please contact:

Abingdon Office

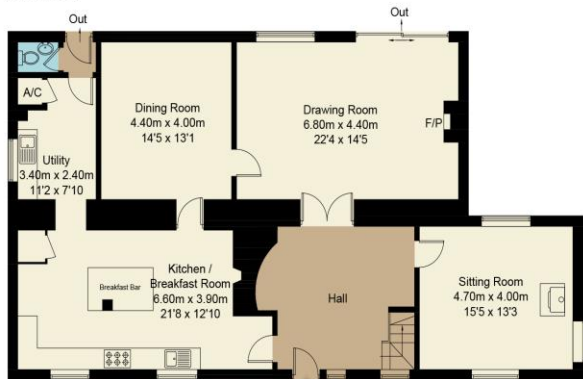
www.oliverjamesproperty.com

E: abingdon@oliverjamesproperty.com

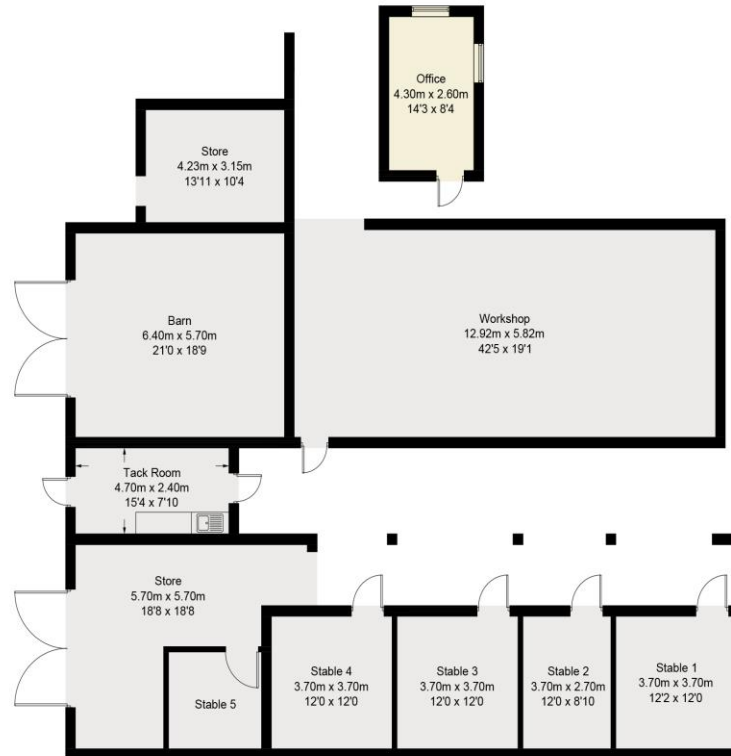
T: 01235 555007



First Floor



Ground Floor



(Not Shown In Actual Location / Orientation)

Outbuildings

Floor plan produced in accordance with RICS Property Measurement Standards.
© Mortimer Photography. Produced for Oliver James.
Unauthorised reproduction prohibited. (ID1010750)



EPC Rating E

These particulars, whilst believed to be accurate are set out as a general outline only for guidance and do not constitute any part of an offer or contract. Intending purchasers should not rely on them as statements of representation or fact, but must satisfy themselves by inspection or otherwise as to their accuracy. No person in this firm's employment has the authority to make or give any representation or warranty in respect of the property.