



3 Bedroom Detached House
Wynstead Barn
Upper Dean, PE28 0NQ

£650,000
Freehold



Wynstead Barn, Upper Dean, PE28 0NQ

Situated on the outskirts of the popular village of Upper Dean, this well presented three bedroom detached barn conversion offers a modern home in a country setting.

Sitting on a plot of approximately 3 acres this is a rare opportunity to purchase a unique home designed to make the most of its equestrian facilities. Having been recently converted this lovely home offers spacious living areas, three double bedrooms (one en-suite) and a useful study/utility area all on one level.

Outside, the covered veranda to the rear overlooks your stables, land and the surrounding countryside and is the perfect spot to relax at the end of a long day, even if it's raining! It's generous size includes an external w/c for those with muddy boots and could accommodate an extension to the living space S.T.P. Planning permission has been granted for a surfaced menage adjacent to the stables and the 3 acres of grazing are fully enclosed. There is ample parking and gravelled vehicle access to the stables.

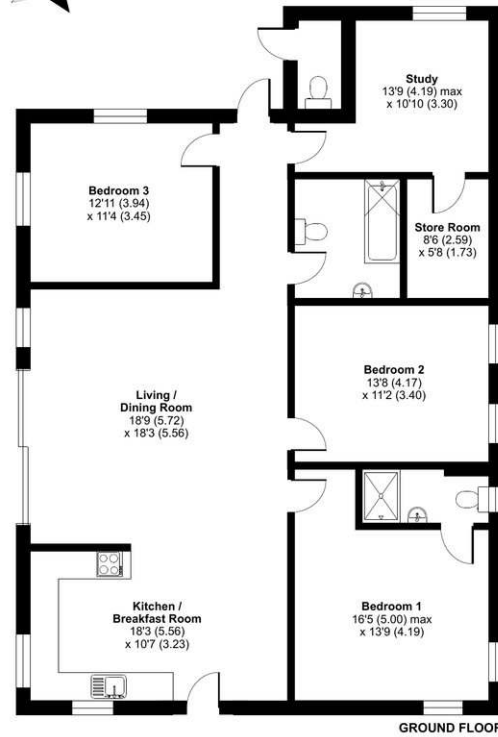
Upper Dean is a lovely village located in North Bedfordshire. The village offers a good local primary school, an excellent pub and a thriving local community. It is within easy reach of Keysoe International EC and the village benefits from miles of great local hacking.

Agents note: The property and access track is subject to public footpaths and private rights of way.

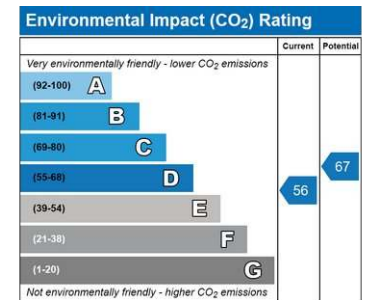
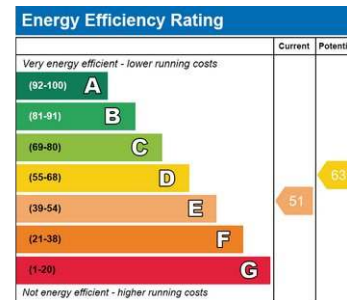
Wynstead Barn, Shelton Road, PE28

Approximate Area = 1421 sq ft / 132 sq m (excludes external wc)

For identification only - Not to scale



Floor plan produced in accordance with RICS Property Measurement Standards incorporating International Property Measurement Standards (IPMS2 Residential). © richcom 2022. Produced for Carr Estates. REF: 931061



3 Grafham Road Ellington Huntingdon Cambridgeshire PE28 0AN

01480 597799

www.carrestates.co.uk